

Warangkana Poomjeen

To: Division of International Affairs and Language Development
Subject: RE: ISU PhD Programs with abundant scholarship to faculty members and students from Naresuan University

----- Forwarded message -----

จาก: **Mark Lin 林建良** <chienliang@isu.edu.tw>

Date: ศ. 10 ก.ค. 2020 เวลา 16:58

Subject: ISU PhD Programs with abundant scholarship to faculty members and students from Naresuan University

To:

Dear Naresuan University,

Warm Greetings from I-Shou University (ISU), Kaohsiung, Taiwan.

ISU has made industrious and diligent efforts to develop educational institutions in Thailand for many years, and intends to deepen bilateral and multilateral connections and promote a bilateral coexistence and co-prosperity cooperation relationship between our partner universities in Thailand and ISU. Therefore, ISU will provide abundant subsidies of scholarship to outstanding faculty members and students from Naresuan University:

- 3 years of tuition waived
- 3 years of dormitory accommodation
- Research assistantship depending on one's dissertation advisor's research projects.

ISU is an international comprehensive university that champions intellectual innovation, social engagement, and universal sustainability. With education quality accredited by AACSB and IEET, we are offering **English-taught doctoral programs** to the **faculty members and students** of our partner universities overseas.

This upcoming academic year, we offer three **English-taught PhD programs**, including **Information Engineering, Biotechnology and Chemical Engineering**, and **Management**. Establishing these high quality English-taught programs exemplifies ISU's commitment to foster International connections.

The deadline of the application is on July, 20.

With four goals of ISU: outstanding teaching, specialized research, excellent student support and international cooperation, ISU enables students to realize their dreams by developing them into top talent for the international community. We keep moving forward in making ISU a green cultural Silicon Valley in Taiwan, which making great contributions to society through developing eco-friendly technologies, integrating outstanding research and collaborating with cutting-edge and innovative industries.

For more details please see the attachment.

We look forward to seeing the talented researchers from distinguished Naresuan University.

Best regards,

Mark chien-Liang Lin

E-mail: chienliang@isu.edu.tw

Tel: (07)6577711 #2085

Office of International & Cross-Strait Affairs (OICA)

No.1, Sec. 1, Syuecheng Rd., Dashu District,



เรียน อธิการบดี

ตามที่มหาวิทยาลัยได้มีความร่วมมือร่วมกับ I-Shou University (ISU) ประเทศไต้หวัน และเพื่อให้การสร้างความร่วมมือทางวิชาการร่วมกันเป็นไปอย่างสัมฤทธิ์ผล

ในการนี้ ISU ได้เสนอทุนการศึกษาในระดับบัณฑิตศึกษา (ปริญญาเอก) English-Taught PHD Programs ให้กับนิสิตและบุคลากรของมหาวิทยาลัย ใน 3 สาขาวิชา ดังนี้

1. Information Engineering
2. Biotechnology and Chemical Engineering
3. Management

โดยผู้ได้รับทุนจะได้รับการสนับสนุนค่าใช้จ่าย ดังนี้

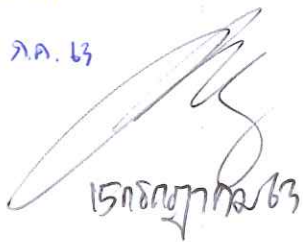
- ค่าธรรมเนียมการศึกษา 3 ปี
- ค่าที่พัก 3 ปี
- การให้ความร่วมมือทางด้านการวิจัย โดยขึ้นอยู่กับโครงการวิจัยจากที่ปรึกษาวิทยานิพนธ์ของผู้ขอรับทุน ทั้งนี้ สามารถศึกษารายละเอียดเพิ่มเติมและยื่นเอกสาร

การสมัครได้ที่ <https://enroll.isu.edu.tw/DI/> โดยจะหมดเขตการยื่นสมัคร ภายในวันที่ 20 ก.ค. 2563

จึงเรียนมาเพื่อโปรดพิจารณา เห็นควรมอบคณะวิศวกรรมศาสตร์และคณะบริหารธุรกิจ เศรษฐศาสตร์และการสื่อสาร เพื่อประชาสัมพันธ์นิสิตและบุคลากรเพื่อสนใจต่อไป

วธกนค

15 ก.ค. 63



15 กรกฎาคม 63

ดร.อภินันท์ อภิรักษ์

รองอธิการบดี

M. M

๑๖ กค ๖๓

PHD PROGRAMS RECRUITMENT



Dear Partners and Friends,

I-Shou University is an international comprehensive university that champions intellectual innovation, social engagement, and universal sustainability. With education quality accredited by AACSB and IEET, we are offering English-taught doctoral programs to the faculty members of our partner universities overseas.

This upcoming academic year, we offer three English-taught PhD programs, including Information Engineering, Biotechnology and Chemical Engineering, and Management. Establishing these high quality English-taught programs exemplifies ISU's commitment to foster International connections.

Scholarship is provided to overseas outstanding students, contingent upon applicants' academic performance and government subsidies, ISU will offer subsidies up to:

- 3 years of tuition waived
- 3 years of dormitory accommodation
- Research assistantship depending on one's dissertation advisor's research projects.

With four goals of ISU: outstanding teaching, specialized research, excellent student support and international cooperation, ISU enables students to realize their dreams by developing them into top talent for the international community. We keep moving forward in making ISU a green cultural Silicon Valley in Taiwan, which making great contributions to society through developing eco-friendly technologies, integrating outstanding research and collaborating with cutting-edge and innovative industries.

We look forward to seeing the talented researchers from your distinguished institute.

Sincerely,
Roger C.Y. Chen, PhD

President
I-Shou University, Taiwan



Information

Program Details

Language of Instruction:

English

Duration of study in Taiwan:

2-3 years (4 to 6 semesters) in Taiwan for coursework and the PhD candidate qualification examination.

Dissertation:

Students could return to their home country to continue working on their dissertation starting from the third year if they are able to complete all the coursework requirements including the qualification exam in the first two to three academic years. Upon the completion of the doctoral dissertation, students should return to ISU for the proposal and final defenses.

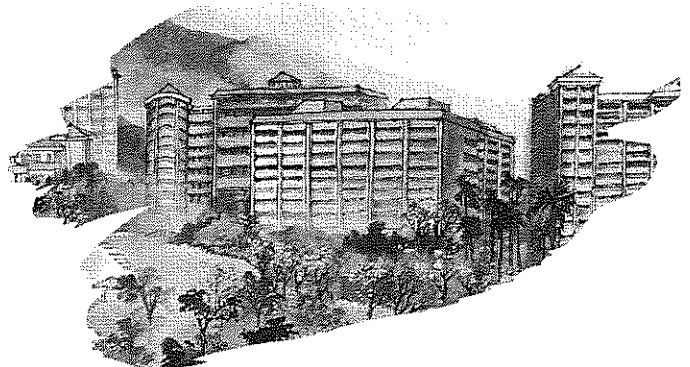
Internship

Students enrolled in PhD program on “Information Engineering” and “Biotechnology and Chemical Engineering” will gain practical experience by spending some time working on research projects with cross-countries industries in Taiwan.

Obligation

To promote mutual understanding and cultural exchange between ISU and our sister universities, particularly the ones in South and Southeast Asia, the students enrolled in this program are required to teach up to 2 courses in English per academic year, but not limited to, on the following subjects:

- South/Southeast Asia Culture
- South/Southeast Asia language



Eligibility of Applicants

Applicants should obtain a master's degree in fields related to computer science/information technology, Biotechnology and Chemical Engineering, or Management prior to applying.

Application Procedures and Admission Criteria

- Application form – Please fill out the online application form by visiting the following URL,
<https://enroll.isu.edu.tw/DI/>
- Official transcript and diploma from graduate work
- Proof of English proficiency (an online interview will be conducted if not available) (Native English speaker waived)
- CV
- Study Plan
- 3 letters of recommendation from academe
- Scanned passport/page of nationality

Important Dates

Application Deadline: July 20th, 2020

Semester Starts: September, 2020

Contact

Ms. Tina Wu

International Students Advisor

Email: hsinjung@isu.edu.tw

Telephone: 886-7-6577711 ext. 2094

ISU Show
TUWU

PROGRAMS

Introduction

Information Engineering

The Department of Information Engineering is one of the seven original departments founded when F. Shou University was established in 1990. As information technology plays an important role in the economy growth in Taiwan, the Department has witnessed significant growth and achievements over the years.

We are committed to training students to become skilled information professionals who are well-rounded both in the basics and in the practical aspects of information engineering. Upon the completion of rigorous training in the program, our graduates are equipped with solid foundation of the professional knowledge in the field, hands-on experiences provided by the faculty, and an awareness of the current trends in information technology. Areas of particular focus include: AI and Multimedia System, Embedded System, Computer Networking and Internet of Things.

More details introducing the program are available on <https://pse.is/R8Y4Y>



Biotechnology and Chemical Engineering

The PhD program in Biotechnology and Chemical Engineering is accredited by IETT. The program has the unique opportunity to provide students with the training on their professional field in Manufacturing process, Materials Technology, and Biological Technology through on-going industrial-academic cooperation.

With reinforced researches facilities, the program opts for industrial-academic cooperation initiatives. Various resources have been consolidated to facilitate collaboration with research joint ventures, to train personnel for basic researches, and to encourage cross-platform upgrades in achieving key breakthroughs in the fields of biotechnology, separation technology, green energy technology and chemical industry.

More information can be found on <https://pse.is/QFE1S>

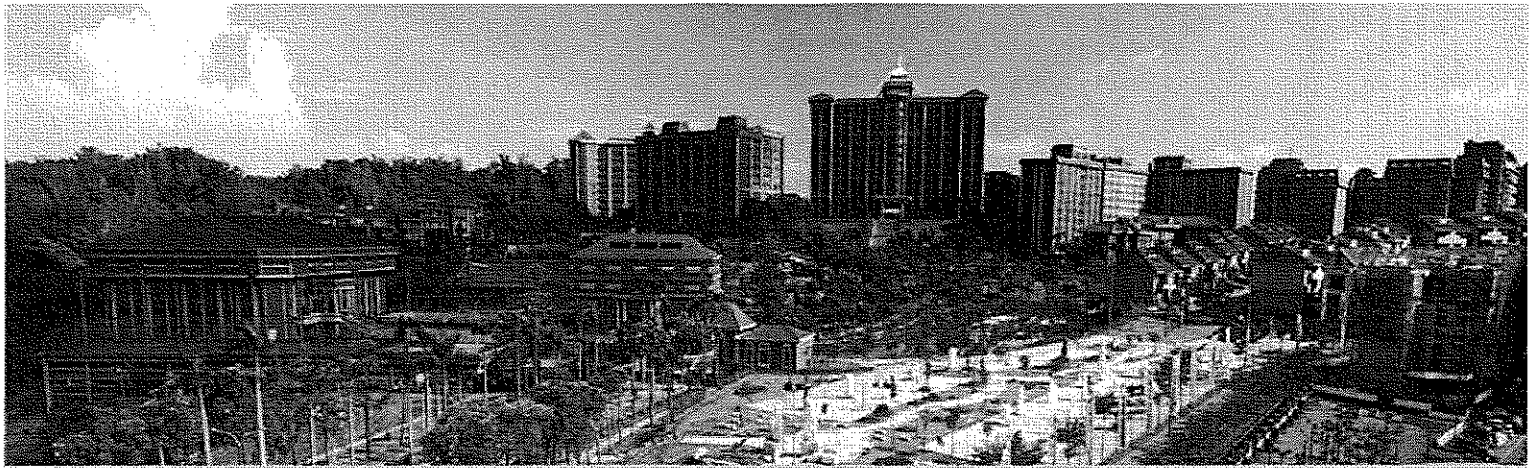


Management

The PhD program in Management aims to prepare future business leaders in a globalized world. The program offers major tracks in organization management and financial management, and has proudly been accredited by the Association to Advance Collegiate Schools of Business (AACSB) since February 2016. It is also rated by the Ministry of Education as a top English program in Taiwan because of its state-of-the-art learning facilities and the composition of the students and faculties which is truly international among other strengths. All of our faculty members in this program hold a doctoral degree from decent universities.

More information can be found on <https://pse.is/NW61Y>





About I-Shou University

ISU is situated in Kaohsiung, the second largest city of Taiwan, and currently has 9 colleges, 42 departments, 17 master's programs, and 7 doctoral programs. ISU has approximately 15,000 students among which 2,000 students are overseas students with around 40 nationalities, and 500+ full-time faculty members, 90% of whom possess a doctoral degree, making it one of the most prominent private universities in Taiwan.

In 2016, the Association to Advance Collegiate Schools of Business International (AACSB) announced that ISU has earned accreditation for its College of Management (CoM), International College (IC), and College of Tourism and Hospitality (CoTH). It is a record-breaking achievement that three colleges within a university have simultaneously received the AACSB accreditation. By receiving the AACSB accreditation, ISU has become the top 5% universities around the world that offer management programs with internationally recognized teaching quality.

In addition, ISU has been ranked by Times Higher Education (THE) as the World Top 1000 University, Top 300 Asia University, and Top 300 of Young University. The rankings are evaluated in accordance with the five core missions of higher education: teaching, research, citations, industry income and international outlook. This THE international recognition is highly regarded by students, academics, industry, and governments around the world.

ISU is committed to providing high quality education and nurturing an internationally friendly campus. With the family-like learning atmosphere, the state-of-the-art facilities, and the vicinity of the E-Da World, ISU provides an unparalleled learning experience for all students.

E UNITED
GROUP

MANUFACTURING
EDUCATION
MEDICAL SERVICES AND HEALTH CARE
REAL ESTATE AND LEISURE BUSINESS

